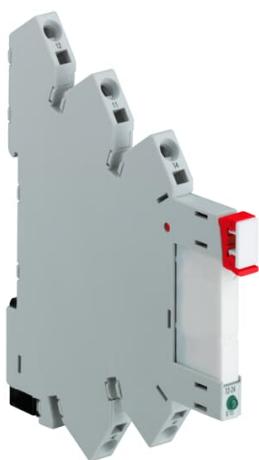


PRODUCT-DETAILS

CR-S024VDC1R

CR-S024VDC1R Pluggable interface relay 1c/o,
A1-A2=24VDC, Output=6A/250VAC



General Information

Extended Product Type	CR-S024VDC1R
Product ID	1SVR405501R3010
EAN	4013614499128
Catalog Description	CR-S024VDC1R Pluggable interface relay 1c/o, A1-A2=24VDC, Output=6A/250VAC
Long Description	CR-S024VDC1R Pluggable interface relay 1c/o, A1-A2=24VDC, Output=6A/250VAC

Ordering

Minimum Order Quantity	10 piece
Customs Tariff Number	85364900

Popular Downloads

Data Sheet, Technical Information	2CDC117022D0201
Instructions and Manuals	2CDC117022D0201

Dimensions

Product Net Width	5 mm
Product Net Height	15 mm
Product Net Depth /	28 mm

Length

Product Net Weight	0.005 kg
--------------------	----------

Technical

Function	Pluggable slim interface relay CR-S
Sub-Function	Relay with standard contacts
Output	1 c/o (SPDT) contact
Output Signal	250 V / 6 A
Rated Control Supply Voltage (U _s)	24 V DC

Environmental

Ambient Air Temperature	Operation -40 ... +85 °C Storage 0 ... +40 °C
RoHS Status	Following EU Directive 2011/65/EU

Certificates and Declarations (Document Number)

CQC Certificate	CQC_14002108002
CSA Certificate	CSA_262671-2785865
cUR Certificate	cUR_E244330
Declaration of Conformity - CE	No declaration needed
EAC Certificate	EAC_RU_C-DE.ME77.B.00443-19
Environmental Information	1SAA981009-2403
Instructions and Manuals	2CDC117022D0201
RoHS Information	1SVD981001-4400
UR Certificate	UR_E244330
VDE Certificate	VDE_40039479

Container Information

Package Level 1 Units	10 piece
Package Level 1 Width	300 mm
Package Level 1 Height	23.7 mm
Package Level 1 Depth / Length	7.4 mm
Package Level 1 Gross Weight	0.06 kg
Package Level 1 EAN	4013614486456

Classifications

Object Classification Code	K
ETIM 4	EC001437 - Switching relay
ETIM 5	EC001437 - Switching relay
ETIM 6	EC001437 - Switching relay
ETIM 7	EC001437 - Switching relay
eClass	7.0 27371601
E-Number (Sweden)	4001384

Categories

Low Voltage Products and Systems → Control Products → Electronic Relays and Controls → Interface Relays and Optocouplers

